



# QUICKFREEZE®

QFM SKU Profiling



Made in U.S.A.



**Step 1.**

Plug the auxiliary extension cord into the control box jack on the inside of the plenum of the QFM (as shown on right)

**Step 2.**

Zip tie the extension cord to the rack (as shown below)



3.5 mm jack on  
control box

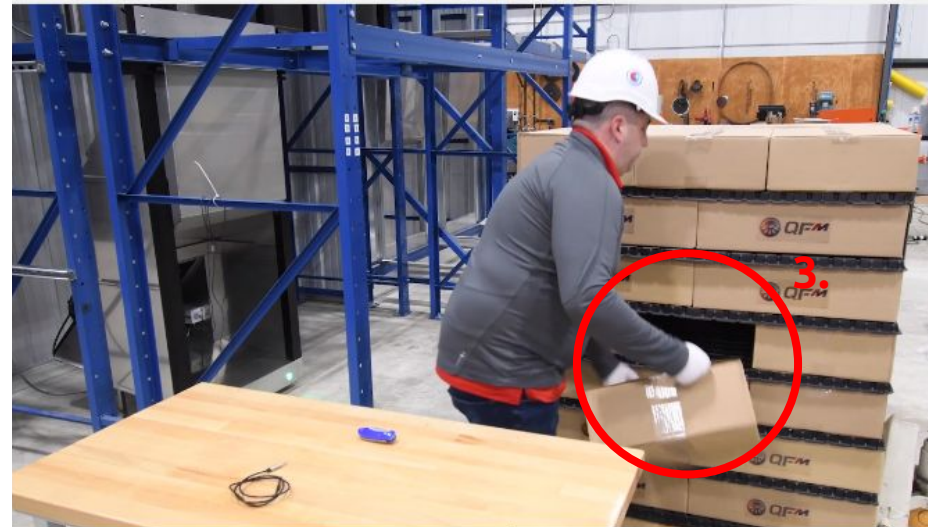
### Step 3.

Remove the center most case from the pallet (as shown on right)

- Be sure to use an unwrapped pallet
- Be sure to use a neatly stacked pallet
- Be sure to use pallet spacers

### Step 4.

- Select the center mass product within the case and insert probe (as shown below)



**Step 5.**

- Insert the profiling case back into the pallet (as shown on right)

**Step 6.**

- Place the pallet against the QFM, making sure you have a good seal. A solid blue light will signify a proper seal.
  - **Note:** The QFM will flash red every 10 seconds as long as a probe is plugged into the control box.



**Proper Seal Signified  
by Blue Light**



## Step 7. - Entering SKU into dashboard Example

- Log into your customer dashboard.
- Select QFM position on the left hand side
  - Enter SKU
  - Enter Cycle Time
  - Enter Target Mode
  - Enter Target Temperature

**Note:** Dashboards and options may differ on your dashboard, as dashboards are customizable.

### QFM Position Ex.

QFM Stats						
Location ↑	Air	Probe	Seal Quality	Remaining	State	Comm
303193	-3.4		138 Pa	0.0 hrs	COMPLETE	true
303195	-1.6		84 Pa	0.0 hrs	COMPLETE	true
303197	-1.6		170 Pa	0.0 hrs	COMPLETE	true
303199	-0.8		103 Pa	0.0 hrs	COMPLETE	true
303201	2.9		151 Pa	0.0 hrs	COMPLETE	true



Full Dashboard View Shown on Next Page 





### QFM Stats

Location ↑	Air	Probe	Seal Quality	Remaining	State	Comm
303193	-3.4		138 Pa	0.0 hrs	COMPLETE	true
303195	-1.6		84 Pa	0.0 hrs	COMPLETE	true
303197	-1.6		170 Pa	0.0 hrs	COMPLETE	true
303199	-0.8		103 Pa	0.0 hrs	COMPLETE	true
303201	2.9		151 Pa	0.0 hrs	COMPLETE	true
303203	1.8		140 Pa	0.0 hrs	COMPLETE	true
303205	-1.5		68 Pa	0.0 hrs	COMPLETE	true
303207	-2.3		201 Pa	0.0 hrs	COMPLETE	true
303209	-3.6		103 Pa	0.0 hrs	COMPLETE	true
303211	2.8		118 Pa	0.0 hrs	COMPLETE	true
303213	-4.3		133 Pa	0.0 hrs	COMPLETE	true

Items per page: 15 1 - 15 of 100

Freezer -2.1

Ready

Running

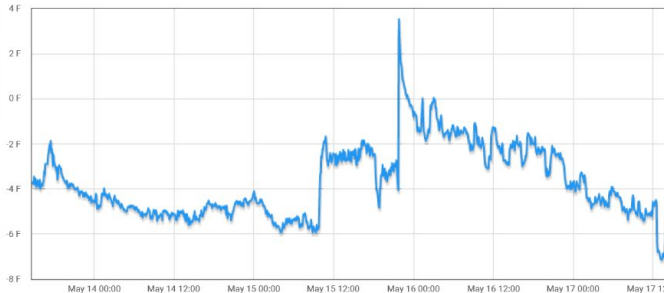
Completed

[Email Support](#)

Seal Quality

119 Pa

### Temps



— Air Temp  
— Probe Temp

SKU

Value \*  
12332

Cycle Run Time

In Seconds \*  
86400

Target Mode

COOLING or WARMING \*  
COOLING

Target Temp

In deg C, Use -9999 to di  
-1

State

COMPLETE

Cycle Time Remaining

0.0

